

# Coronavirus global response:

Our impact from March 2020 to February 2021

tearfund

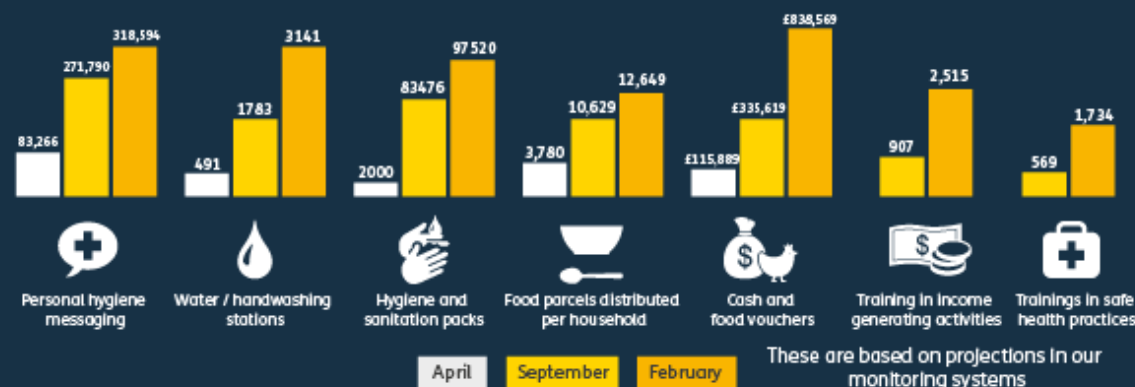
## Reach of our work

An increase of countries implementing projects



## Project themes

Between April 2020 and February 2021 we saw a growth globally in all of our projects:



## Online Resources



110 theological and practical resources produced for Covid-19



Viewed 33,387 times

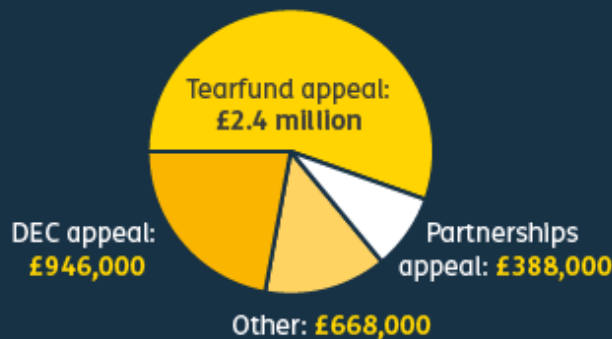


22,445 documents were downloaded across over 100 countries

## Spending

Since March 2020, £4.4 million has been spent

Our sources of income are:



## Project reach



64 projects globally

Asla: 11

East and Central Africa: 10

Latin America and Caribbean: 6

Southern and East Africa: 12

West Africa: 13

Eurasia and North Africa: 12